

HS2

Help build

Britain's

future



# Welcome and project overview

# HS2

Allan Cook, Chair, HS2 Ltd



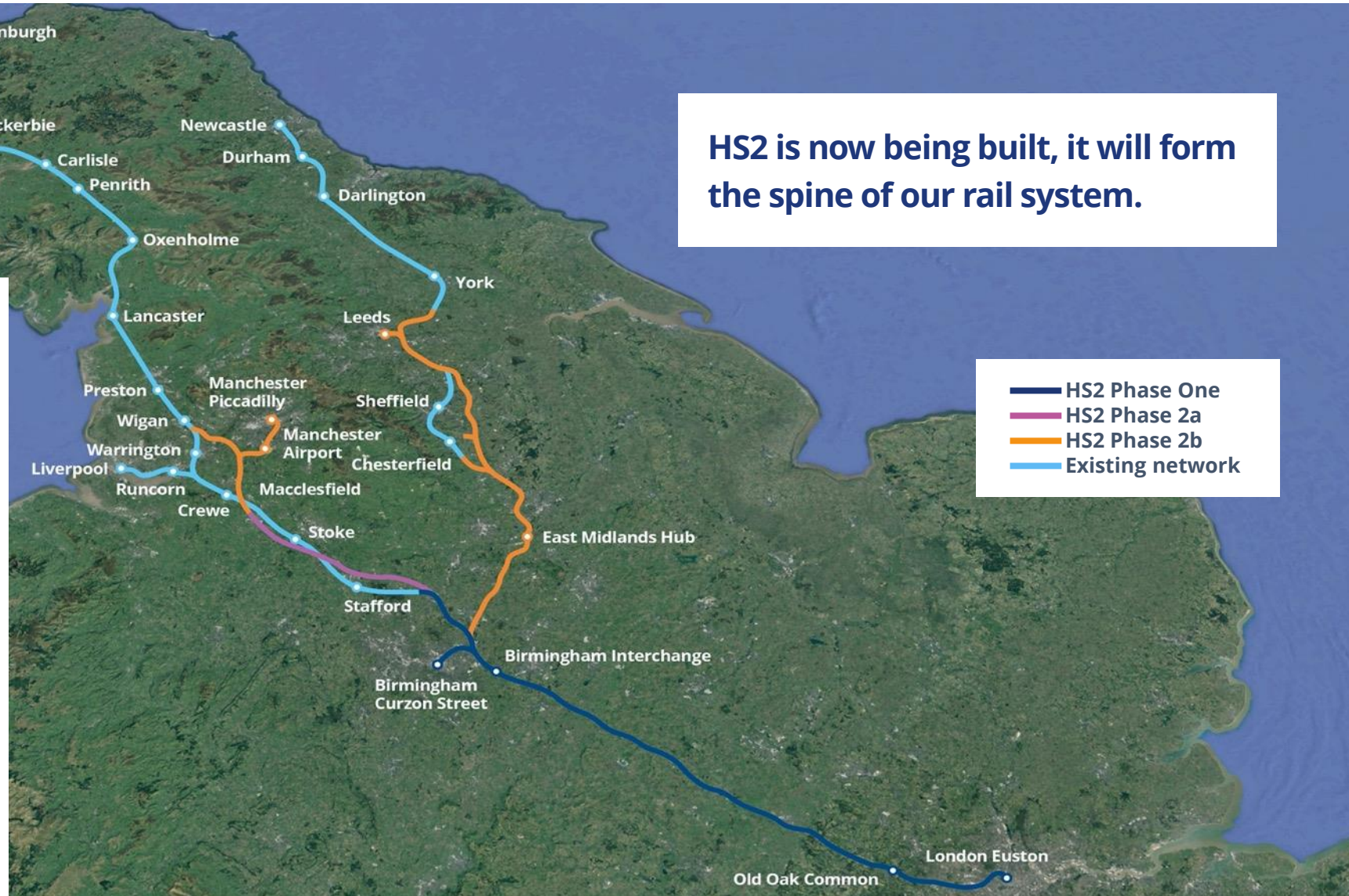
# Bringing Britain closer together

## Key facts

- 345 miles of brand new high speed track will connect Birmingham, Manchester, Leeds and London.
- HS2 trains will also run on the existing network, serving towns and cities in the North West, North East and Scotland.
- HS2 will connect 30 million people and 8 of our largest cities, with 25 stops from Scotland to the South East.

HS2 is now being built, it will form the spine of our rail system.

— HS2 Phase One  
— HS2 Phase 2a  
— HS2 Phase 2b  
— Existing network



# Why Britain needs HS2

More  
capacity



Cutting  
carbon

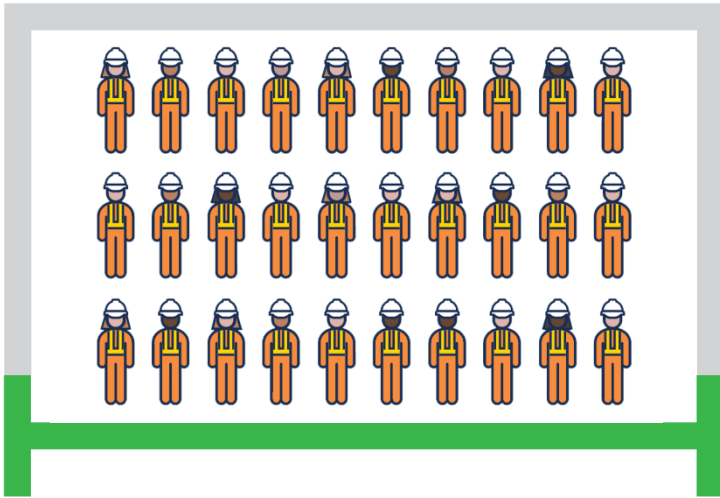


Better  
connectivity





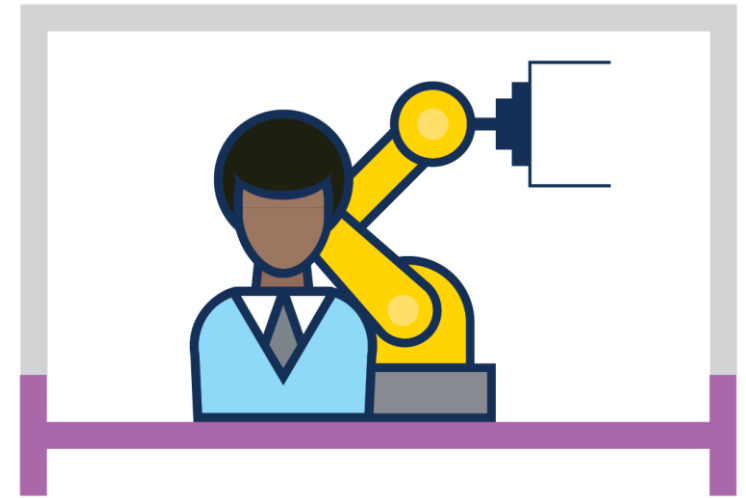
# Upskilling Britain



At peak construction, we will need **30,000 people** to design and build HS2.



Over **2,000 apprentices** will help to build HS2, with hundreds already doing so.

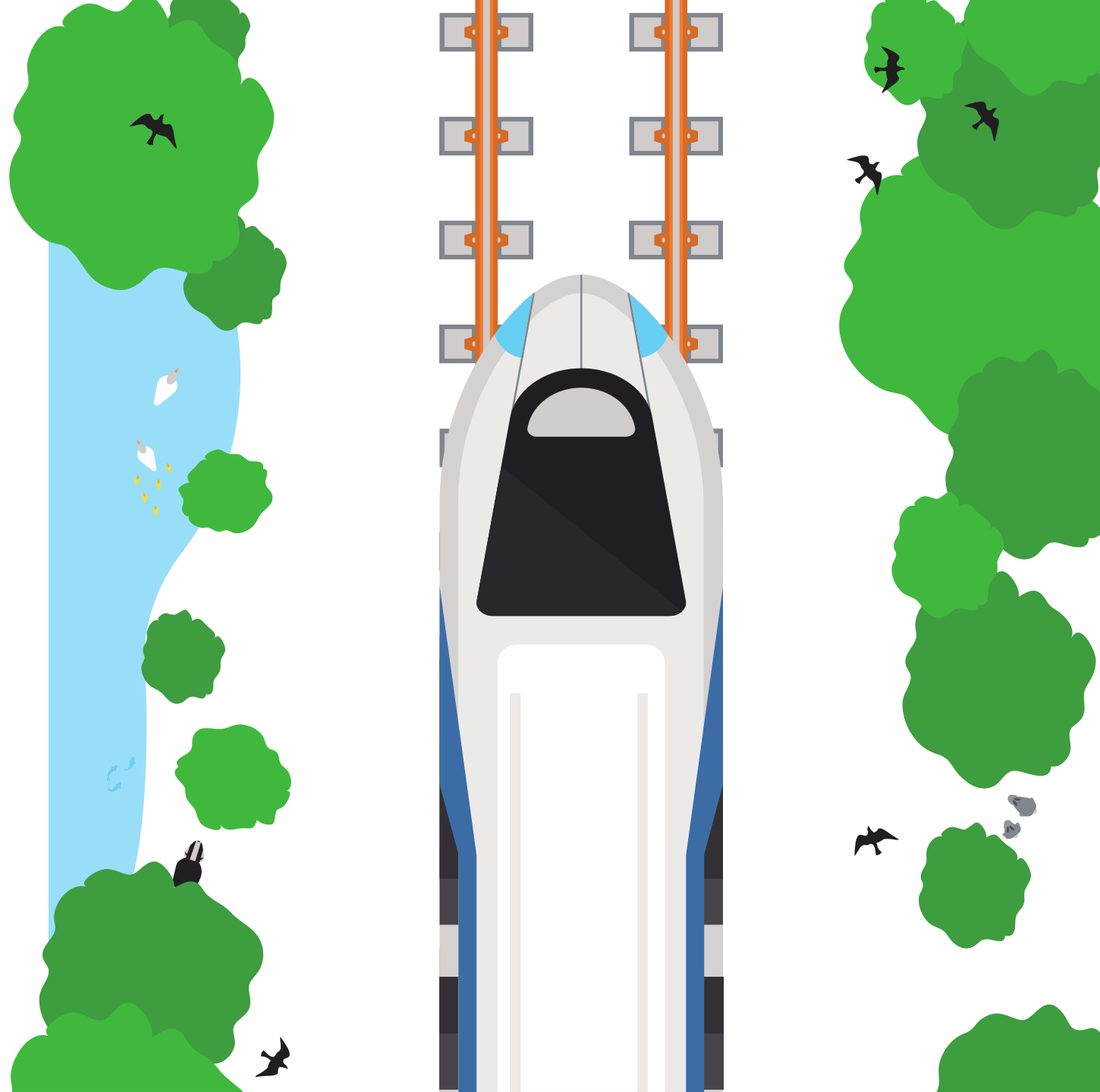


More than 2,000 businesses have already delivered work on HS2 and **70% are SME's**.



# Creating our green corridor

We will plant 7 million **trees and shrubs** along the Phase One route and leave behind 30% more wildlife habitats than exists now.



# Progress report

## Phase One

will link the West Midlands and London.

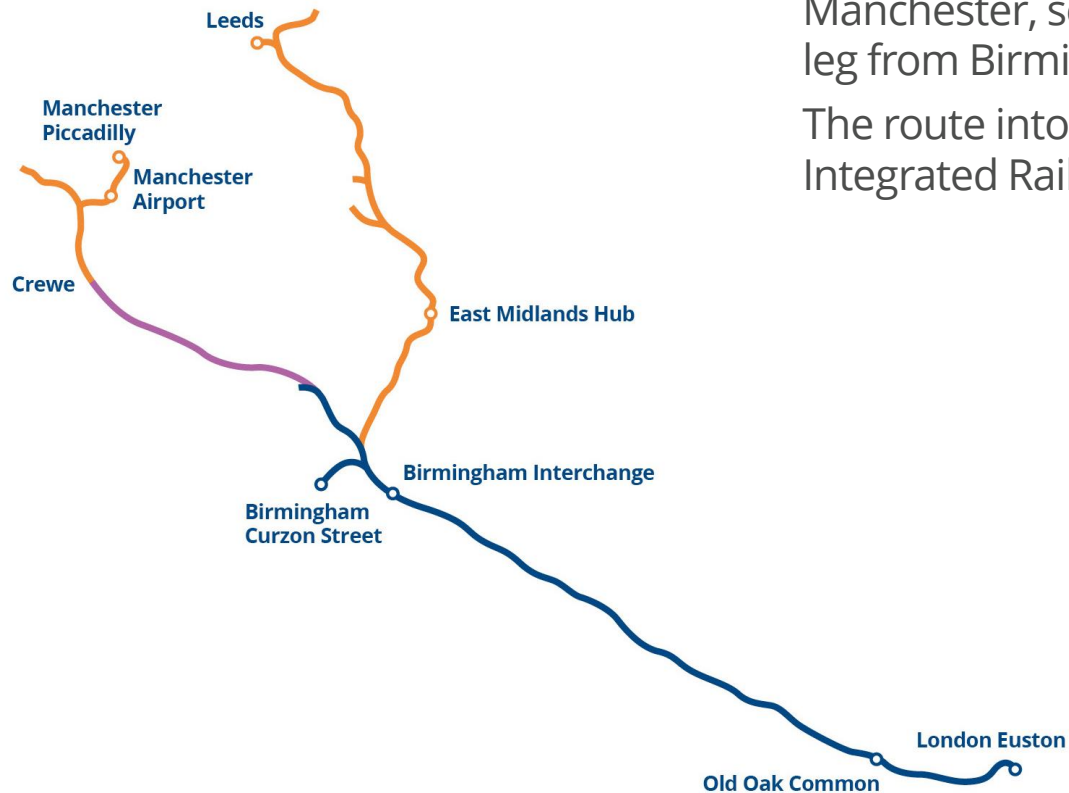
The main construction works for Phase One have now begun there are currently 9,000 jobs supported nationwide. 240 sites currently active between the West Midlands and London.



Prime Minister Boris Johnson visits Interchange site to launch the start of construction, September 2020

## Phase 2a

will extend the line to Crewe. The Phase 2a Bill is progressing through Parliament.



## Phase 2b

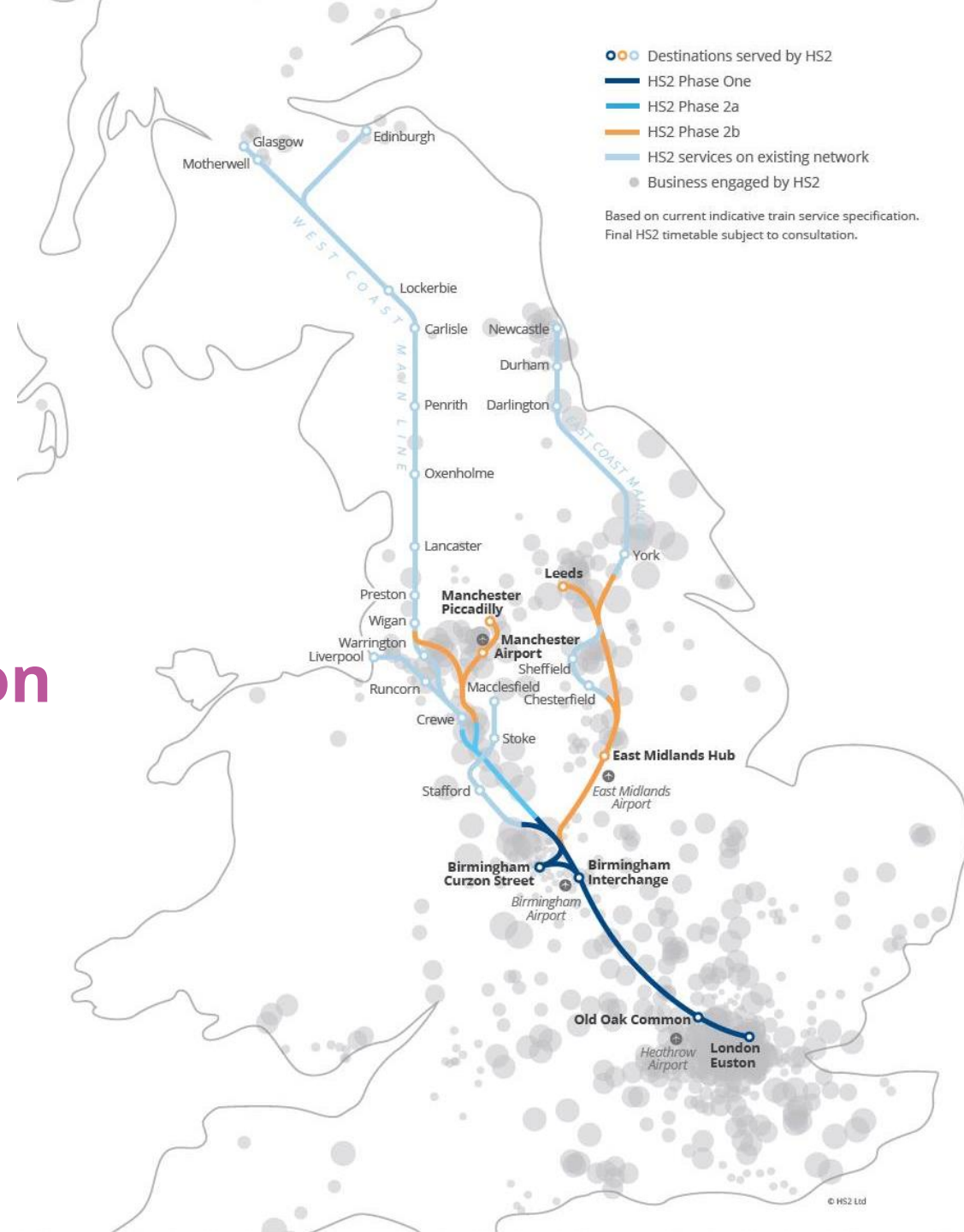
will complete the line to Leeds in the East and Manchester in the West. The Bill is being prepared for route into Manchester, securing the full western leg from Birmingham. The route into Leeds is part of the Integrated Rail Plan.

# Supply chain

2,150 companies from every corner of the UK have already worked on HS2, 70% of which are SMEs and **98% are UK-based.**

Following Notice to Proceed, **£12 billion** will be going into the supply chain.

We estimate **400,000 supply chain opportunities** will result from the construction of Phase One.







# McAuliffe Group

Wolverhampton



# Forkers Ltd

West Bromwich







# CLM Ltd

Oldbury

# Opportunities for Black Country businesses

# HS2

Robin Lapish, Supply Chain Manager, HS2 Ltd



# Almost limitless variety

access accommodation building **civil** commercial concrete

construction consultancy contractor control

demolition design drainage **electrical engineering**

environmental **equipment** fabrication fencing geotechnical ground

hire infrastructure installation labour logistics

**management** manufacture manufacturer

manufacturing materials mechanical monitoring piling **plant** power precast

products project protection **rail** recruitment remediation safety

security **services** software solutions specialist steel

steelwork structural supplier **supply** surveying **systems**

temporary waste water works

---



# Procuring on HS2

HS2 Ltd is bound by the Utilities Contract Regulations

## Competition

Companies manufacturing in Britain have the opportunity to compete for contracts in the supply chain.

Contracts will be awarded to those suppliers who demonstrate best value.

## Engagement

To maximise British involvement in these supply chain opportunities HS2 has engaged extensively with businesses of all sizes from a diverse range of sectors and across the UK.

## Relationship

HS2 will maintain a relationship with any British business interested in supporting our supply chain, across the lifetime of the programme.

HS2's direct contractors will be encouraged to engage directly with UK businesses.

# Bidders and buyers

HS2 requires our Tier One contractors to open up competition as widely as possible.



# What businesses can do now

View HS2  
supplier  
guidance



[www.hs2.org.uk](http://www.hs2.org.uk)

Register on  
CompeteFor



[www.CompeteFor.com/hs2](http://www.CompeteFor.com/hs2)

Use free  
industry  
resources



[www.supplychainschool.co.uk](http://www.supplychainschool.co.uk)

Work with  
business  
organisations



LEPs, Chambers,  
ACAS, etc

Contact us  
directly



[scc@hs2.org.uk](mailto:scc@hs2.org.uk)

# How you can help HS2

**Openly promote opportunities for businesses in your constituency through your channels.**

**Support the project and the opportunities it is creating for businesses in your constituencies.**

**Work with HS2 to showcase companies that have won business to build the new railway.**



# Thank you

# HS2

# Discussion/Q&A

